

Welcome To Xtract for Windows

Welcome to Xtract for Windows. If this is your first time using Xtract, please read on. If not, then some how you lost your configuration file. Close this window and re-setup Xtract to the way you want it and save your configuration.

Xtract has a few requirements to run! PKUNZIP.EXE and ARJ.EXE must be either in your Xtract directory or in a directory that is in your PATH. The PIF files that came with Xtract must be in the same directory as XTRACT.EXE. See [Files Included with Xtract for Windows](#) for help on what each file does.

Xtract for Windows uses a drag-drop interface. You drag your archive file to the place you want it to go depending on what you do. For help on extracting files, viewing files, and using the Multiple File Queue, see the Overview. I've tried to make Xtract as Intuitive as possible, so I hope you find it easy to learn and use.

Xtract supports the two most popular archivers, .ZIP and .ARJ. If people ask, I will expand support to other popular archive formats.

This is the part where I have to say that Xtract for Windows is NOT FREE. If you do find Xtract to be a useful tool, please pay the registration fee of \$15.00. With this, you will receive a disk containing the latest version of Xtract for Windows, a Registration Number, and will receive notices about future Xtract upgrades. If you have any comments or suggestions, or anything else, you can call me at (voice) 616-940-4739.

EccentriX

2705 Shadowbrook SE

Grand Rapids, MI 49546

Please make all checks payable to 'Jeff Branc'! Thank you.

Overview

The Overview details extracting files, viewing files, and using the Multiple File Queue.

The Basics

Button Bar

Configuration Window

ZIP Options

ARJ Options

Files Included with Xtract for Windows

.ZIP

This is an archive file created by PKZIP.EXE. It contains compressed files which can be used after 'unzipping' it with PKUNZIP.EXE

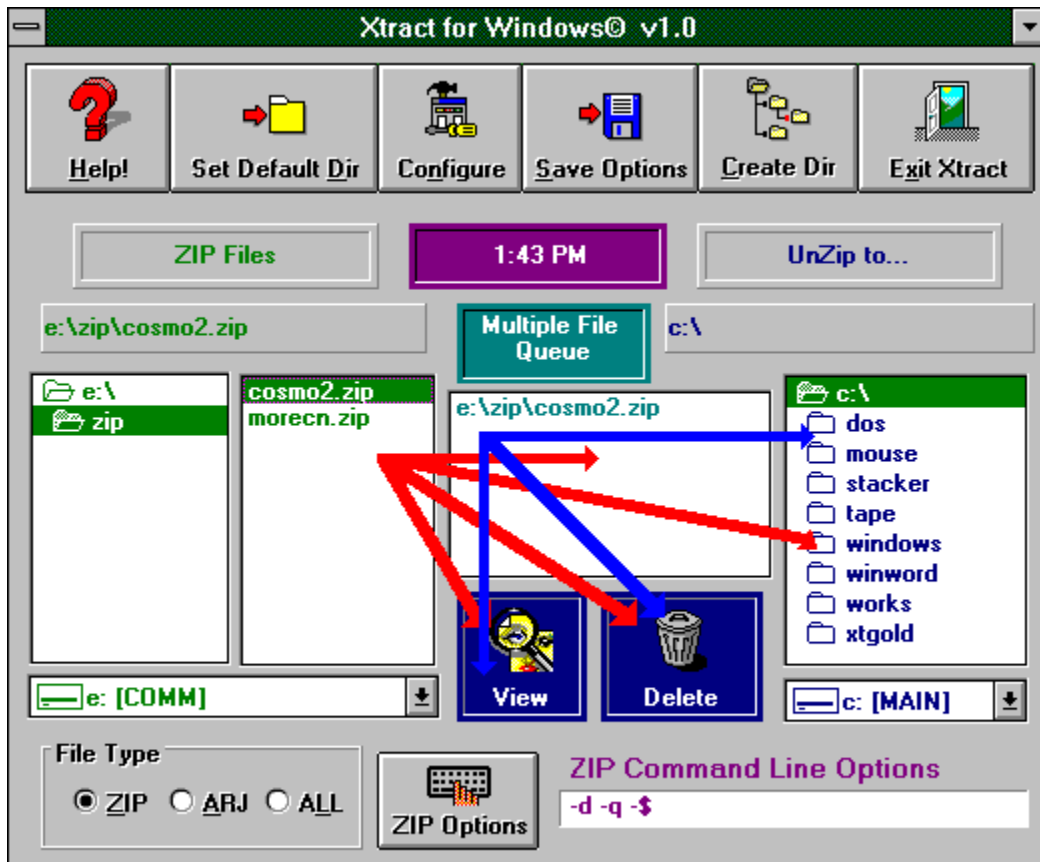
.ARJ

This is an archive file created by ARJ.EXE. It contains compressed files which can be used after 'unarjing' them with ARJ.EXE.

Overview of Xtract for Windows

Xtract uses a 'drag and drop' interface. To 'drag' a file, you click on a file from the file listing and hold the mouse button down. While holding the mouse button down you 'drag' the file to its destination. To 'drop' the file, simply release the mouse button. When I say 'drag to the Trash Can', I mean drag it to the Trash Can (The mouse cursor will change to a trash can when your over it) and drop it.

You can drag a file to the Multiple File Queue, The View icon, the Trash Can, or the Extract To... Directory. From the Multiple File Queue, you can drag the files to the View icon, the Trash Can, or the Extract To... Directory. This is further explained below.



Single File Extract:

Click on the appropriate setting in the File Type Box, then go to the directory where your archive file is located on the LEFT Directory.

Next, go to the destination directory on the RIGHT (Extract to...) Directory.

When you are IN the directory you want the file to be in, drag the file from the LEFT directory to the RIGHT Directory,

Single File View:

Find the file in the LEFT directory and drag it to the View icon box located below the Multiple File Queue box.

Multiple File Queue:

Follow the same steps as in the Single File Extract, except drag them to the Multiple

File Queue Box instead of to the RIGHT Directory.

SHORTCUT: You can also hold down the SHIFT KEY while you click on files and it will automatically add them to the Multiple File Queue Box. If the file is already there, it will remove it.

Extract All files:

To extract all the files, drag them from the Multiple File Queue Box to the destination directory (RIGHT Directory). If the destination is a floppy drive, Xtract will prompt you to insert a new disk after each file. If you want to put them all on the same disk, click the "Continue on Same Disk" button. If you want to put that file on the same disk, but may want to put other files on a different disk, just press the OK button and the same dialog box will reappear after it is finished with that file.

View ALL files:

To view the files, drag them from the Queue Box to the View icon.

Remove 1 file:

To remove 1 file from the Queue Box, either drag the same file from the LEFT directory to the Multiple File Queue, or drag the file FROM the Queue box to the Trash Can icon.

Remove ALL files:

To remove ALL the files, hold down the SHIFT KEY and drag the files from the Queue box to the Trash Can icon.

Delete ALL files:

To physically DELETE all the files hold down the CONTROL (CTL) KEY and drag the files from the Queue box to the Trash Can icon. **WARNING! This will actually delete the files from the hard disk!**

Delete File:

To delete a file, drag it from the LEFT Directory to the Trash Can icon. **WARNING! This will actually delete the files from the hard disk!**

If you have experienced unzipping and un-arj'ing, this should be all you need to know to get up and running quickly. If you need help on other parts of the program, feel free to look around this help file. I've tried to make it as complete and easy as possible.

[Go Back](#)

The Basics

Archive files contain many compressed files. It is an easy, efficient way to store many files into one file, for transportation purposes (usually by modem) or for saving space (you can average 50% or more compression). To use the files that are stored in an archived file, you need to unarchive (extract, decompress) them. This program is designed to help you unarchive the files you want to the directory you want them to go. It supports the two most popular archivers, PKZip and Arj.

The Button Bar



Help! - This is what got you here!

Set Default Directory - Usually, if you frequently download files, you keep all your archive files in 1 directory. If you go to that directory while running Xtract, click this button. Every time Xtract loads it will automatically go to this directory. NOTE: You can specify different directories for ZIP and ARJ.

Configure - This loads up the Configuration Window to help you customize Xtract.

Save Options - This will save your configuration.

Default .ZIP and .ARJ Directories

Your ZIP and ARJ command line options

All the settings in the Configuration Window

All the window positions

Create Directory - This will create a directory off of the directory currently selected.

NOTE: This function works with the RIGHT directory tree. Also, you can select in the Configuration Window if you want to change to this directory immediately after creating it.

Exit Xtract - This exits Xtract for Windows. You can also double click on the Control Box in the upper left-hand corner of the window.

ZIP or ARJ Options - This is not on the top button bar. It is located next to the File Type box. If you are in 'ZIP' mode, you will see ZIP Options on this button. When you click it, it will load the ZIP Options dialog box. If you are in 'ARJ' mode, you will see ARJ Options on this button. When you click it, it will load the ARJ Options dialog box.

Configuration Window

This allows you to define how Xtract for Windows basically behaves.

Default File Type - There is help on the window to explain what this is. Here's a quick synopsis:

If you choose **ZIP**: When the program loads, the Extract From (LEFT) directory will be at the Default Zip Directory, the filespec will be "*.ZIP". This is called being in ZIP Mode.

If you choose **ARJ** you will be in ARJ Mode

If you choose **ALL**, the filespec will be "*.*" If you drag a .ZIP file to a directory to un-zip it, the program will use your ZIP Command Line Options, ect.

If you choose **Last Used**, the program will save the file Mode you were in when you exited the program (whether it be ZIP, ARJ or ALL) and load that up when you start the program the next time. This is probably the best mode for normal un-archiving with both ARJ and PKUNZIP.

Change to Directory after creating it - Well, as you can probably guess, when this option is checked, you will automatically switch to the directory you just created (See Button Bar).

Zip File Viewer - Specify the file name of your .ZIP file viewer. By default its "PKUNZIP -V." If you specify an invalid viewer, you may see "bad command or file name" when you try to view a file.

Arj File Viewer - Specify the file name of your .ARJ file viewer. By default its "ARJ V." If you specify an invalid viewer, you may see "bad command or file name" when you try to view a file.

Extract From

This is the directory structure on the LEFT side of the window. You can drag the files from there to the 'Multiple File Queue', View, Delete, or to the Extract To directory to unarchive the file in that directory.

File Spec

This uses standard DOS wild cards to filter the file listing.

A filespec of *.ZIP will show only those files that end in .ZIP, which are usually files archived with PKZIP that need to be un-archived with PKUNZIP.

A Filespec of *.ARJ will show only those files that end in .ARJ, which are usually files archived with ARJ that need to be un-archived with ARJ.

A filespec of *.* will show all files in that directory.

Files Included with Xtract for Windows

When you receive Xtract for Windows, it will be in archive form. You should have received the following files:

XTRACT.EXE	The main file
XTRACT.HLP	This Help file your reading now
XZIP.PIF	PIF File (Read below) for .ZIP archive files
XZIP.BAT	Batch file for unzipping files. DO NOT CHANGE!
XARJ.PIF	PIF File for .ARJ archive files
XARJ.BAT	Batch file for unarjng files. DO NOT CHANGE!
XVIEW.PIF	PIF File for viewing archive files
XVIEW.BAT	Batch file for viewing archives. DO NOT CHANGE!
VBRUN100.DLL	DLL File required to run all MS Visual Basic apps.
THREED.VBX	Another library required for Xtract to run.

The Help, PIF, and BAT files MUST be in the same directory as XTRACT.EXE. VBRUN100.DLL can be either in your XTRACT.EXE directory or in your WINDOWS directory. THREED.VBX can be either in your XTRACT.EXE directory or in your WINDOWS\SYSTEM directory.

NOTE: I have found it easiest to create a directory called ARCS or something to that affect and put your archivers and un-archivers there (PKZIP.EXE, PKUNZIP.EXE, ARJ.EXE). Then add this directory to your PATH statement. You will be able to type PKUNZIP from anywhere and it will run!

Whats special

The Execution: section is set to **Background**.

This option should be set if you plan to run other applications while Xtract is loaded.

Display Usage: section is set to **Windowed**.

This will let the un-archiver run in a window. You can run it Full Screen, but it is not as convenient.

DO NOT put anything in the Optional Parameters: section. Xtract will handle all command line parameters sent to the un-archiver.

If you are running in **Standard Mode**, the only thing you have to worry about is the above statement about Optional Parameters.

The other features are basically up to you. You will have to change the paths to your PKUNZIP.EXE and your ARJ.EXE to match those of your system if they are not in your path (See above NOTE:). If you encounter any problems, you can use the PIF Editors online help or your Windows manual.

Viewing a File

In this case, viewing a file means displaying a list of the files/directories contained in the archive file. For help on doing this, see the [Overview](#).

If you wish to change the file views, see [Configuration Window](#).

ARJ Options

This allows you to set up the command line options for ARJ. ARJ supports MANY command line parameters. You can type in any parameters in the Arj Command Line Options text box. Please be careful when doing so. If you type it in incorrect parameters, the unarjng will not work! Also, if you type them in yourself, make sure there is a space between the commands.

Correct: x -n -y

Incorrect: x-n-y

Please see the ARJ documentation for help with these commands.

Note: Due to batch file limitations, you can only specify **7** command line parameters!

ZIP Options

This allows you to set up the command line options used for PKUNZIP. PKUNZIP supports MANY command line parameters. You can type in any parameters in the Zip Command Line Options text box. Please be careful when doing so. If you type in incorrect parameters, the unzipping will not work! Also, if you type them in yourself, make sure there is a space between the commands.

Correct: -d -\$ -q

Incorrect: -d-\$-q

Please see the PKUNZIP documentation for help with these switches.

Note: Due to batch file limitations, you can only specify **7** command line parameters!

Path

When you type a command on the DOS prompt, it searches the current directory for the command. If it does not find it, it searches the directories contained in your PATH statement. You can set and change your PATH in your AUTOEXEC.BAT file.